

People Power to the Polls

By Amanda Sterling, ECA Board Treasurer

Democracy needs us. It's urgent. Thousands of Michiganders are being called upon to come together to do the critical work of assisting voters and processing ballots on November 3, 2020. Election workers will arguably be our most essential, frontline workers and the guardians of American democracy in November.

The general election will likely see the highest election turnout in decades and we need the most able among us to step up. One of the most important ways you can help this year is by signing up to serve as an election worker to assist voters and count ballots.

The majority of poll workers are typically over the age of 61, with nearly a quarter of

them over the age of 70 – one of the groups most at risk of serious illness if exposed to the coronavirus. In March, Milwaukee had to reduce its number of voting locations from 182 to FIVE during their primary due to a lack of poll workers. Those who have the ability to do this essential work are being called to duty.

Michigan's Secretary of State is using every tool at her disposal to safeguard our votes.

EVERY REGISTERED VOTER has the option to vote by mail by simply requesting an absentee ballot which can be returned in person at their clerk's office, at a designated secure dropbox (outdoors at 300 W. Ottawa downtown), or via mail. So many options!

For voters who need to vote in person the day of the election, there will be health

department guidelines and best practices to keep all staff and voters safe.

Call to Action from the Michigan Secretary of State, Jocelyn Benson:

If you are a registered voter in Michigan looking to do your part in this critical moment, learn more and sign up at Michigan.gov/DemocracyMVP.

If you're not yet registered to vote but would like to get involved, you can register to vote online (at Michigan.gov/VoterRegistration) and then sign up to serve as an election worker. *You will be paid* for your time on election day, and you will be a crucial part of the team helping to protect and defend Michigan's elections. Apply today. Our democracy needs you now more than ever. ♦



Vote November 3rd; your freedom depends on it Photo by Amanda Sterling

Urbanism

A Place for Everyone
Page 5

Community

Engaging Eastown
Page 7

Civics

Census Homestretch
Page 11



Fostering a safe, diverse, and walkable Eastown neighborhood by creating opportunities for neighbors and friends to engage and connect.

415 Ethel SE
Grand Rapids, MI 49506
616.451.3025
info@eastown.org
www.eastown.org

ECA Board Members

- David Jirousek, President
- Dakota Riehl-Davis, Vice-President
- Amanda Sterling, Treasurer
- Staci Rickman, Secretary
- Michael Bopp
- Becky Dickenson
- Matt Feyen
- Andrew Fisher
- Pamela Goderski
- Marta Johnson-Ebels
- Noah Joseph
- Dan Wells

Executive Director

Emma Heemskerck

The Eastown Community Association board of directors meets on the second Monday of every month at 6 p.m. via Zoom. Eastown residents and business owners are encouraged to attend. For more information visit our website at eastown.org

Facebook: eastowngr
Instagram: @eastowngr
Twitter: @EastownGR



INTRODUCING THE DIRECTOR

Emma Heemskerck Joins ECA

Interview by Lee Hardy, Access Contributor

Emma Heemskerck officially started her position as the new Executive Director of the Eastown Community Association on August 3rd. As we welcome her to the office, we also want to give her an opportunity to (re)introduce herself to the Eastown community. I recently sent her some questions by email. Here are her responses.—Lee Hardy

Lee: What interested you in applying for the Executive Director position in the Eastown Community Association?

Emma: It's a great opportunity to give back to the area where I was born and raised. I was familiar with the ECA, and excited at the idea of putting my urban planning and community development experience to work to help residents, and to collaborate to improve social equity. I look forward to doing just that!

Lee: What kind of experience, skills, and passions do you bring to the Association?

Emma: I usually describe myself jokingly as a “somewhat unusual combination of highly creative and organized.” I'm really an artist at heart, but I'm also an organized creative problem solver. I'm also passionate about social justice and interested in how organizations and systems work. While I was studying for my undergraduate degree in art and women's studies at Aquinas College, I got hooked on nonprofit work as an intern at the Nokomis Foundation, a private foundation focused on lifting womens' and girls' voices. Then my interests developed into more urban issues around the time I had the opportunity to help co-found The Division Avenue Arts Cooperative (The DAAC) in

continued on page 10



Executive Director Emma Heemskerck. Photo: Ryan Griffin - Stegink.

EASTOWN ACCESS

As the newsletter of the Eastown Community Association, the *Access* is published six times a year.

Contributors

Pamela Goderski, Lee Hardy, Emma Heemskerck, Staci Rickman, Amanda Sterling, Kali Swan, Amy Wolterstorff

The views and opinions expressed in Access are not necessarily those of the ECA Board.

The Access reserves the right to accept, reject or edit any material submitted for publication.

Supported by CDBG funds via the City of Grand Rapids.

ADVERTISING IN THE ACCESS

The *Eastown Access* is delivered to over 2,200 households and 100 businesses six times a year. Place your ad today!

Advertising Rates:

Size	Single Issue	Six Issues
Half-Page	\$175	\$800
Quarter-Page	\$100	\$500
4" Column	\$75	\$350

Access is also available online at eastown.org. Send all inquiries & advertising files to: info@eastown.org.

EBA NOTES

Thank You For Supporting Local Businesses

by Kali Swan, Eastown Business Association

Thank you again for your continued support as you shop locally for your goods and services.

Our Eastown Business District is full of diversity from one-of-a-kind antiques and collectibles, a wide array of restaurants and food, community services to nightlife and entertainment.

We've even got some NEW Businesses for you to come and check out! Welcome to our Neighborhood; Amethyst Bee Cakery, Commune, FreshWater Whale Boutique, Luxe Nail Bar, and Wing Heaven. Old and new businesses please subscribe to our mailing list to receive the latest updates happening in our community.

To subscribe to our weekly mailing list, visit our Eastown Business Association Website : <https://eastowngr.com/> Scroll down to the bottom and enter your contact information in the Bottom Right Corner! We have a lot of exciting information coming up soon and we want to make sure you receive it! Besides our email updates, you can also check out updates found on our Eastown Facebook Page: <https://www.facebook.com/EBAGR>.

Claim your business listing! Uptown has a BRAND NEW WEBSITE and we need you to go and claim your business. You will be prompted to answer questions and fill in information regarding your goods and services provided. This will be a huge step in our collaboration in obtaining and keeping an up-to-date directory for proper future communication.

Again, we are trying to make sure you get the latest scoop on what is happening in our district. Please visit the following link and scroll down to the "Update or Claim your Uptown Business Directory Listing": <https://uptowngr.com/business-resources/> ♦

RE DISCOVER EASTOWN @ THIS FALL!
Grand Rapids' most unique neighborhood.

Celebrating 20 years in Easttown!

EASTTOWN FINANCIAL SERVICES
Gain Clarity. Go Confidently.

Confused by your Medicare options? We can help.
Open Enrollment for 2021 Medicare Advantage Plans is
October 15 - December 7, 2020.

Financial Planning and Investments • Life and Health Insurance • Income Tax
616.233.9773 - www.easttownfinancial.com - office@easttownfinancial.com

Easttown Financial Advisors LLC is a registered investment adviser. Information presented is for educational purposes only and does not intend to make an offer or solicitation for the sale or purchase of any securities or investment strategies. Investments involve risk and, unless otherwise stated, are not guaranteed. Be sure to first consult with a qualified financial adviser and/or tax professional before implementing any strategy discussed herein.

sd
spirit dreams
the store with a conscience since 1994

Love and compassion are necessities, not luxuries.
— Dalai Lama

Current store hours 12-5 pm Mon-Sat
Curbside pickup and online ordering available
1430 Lake Drive SE
www.spiritdreamsgr.com
616-456-9889 / info@spiritdreamsgr.com

  **Local First**
support locally owned business

NEW IN THE NEIGHBORHOOD

Eastown Gets Its Own Piece of Wing Heaven

by Emma Heemsker, ECA Executive Director



Traditional and Honey Heaven wings

Chicken wing lovers can rejoice now that the corner of Wealthy Street and Ethel Avenue is the new home of Wing Heaven Number Two opened by James LLC on August 1st, 2020.

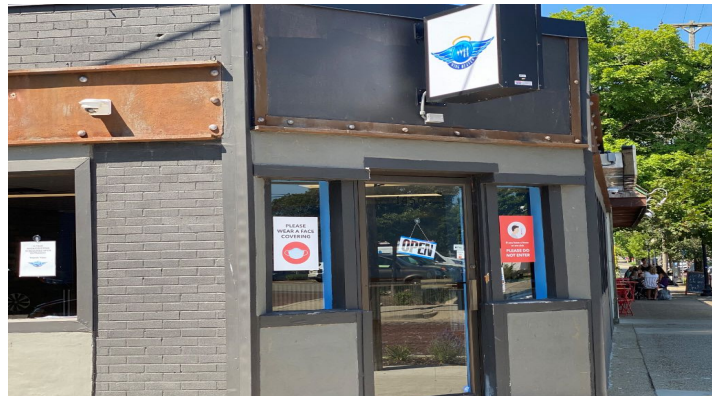
Under the same management as its 'mother' location at 2020 Eastern Avenue SE, the new 1450 Wealthy Street SE location serves up traditional and boneless "Honey Heaven" wings with 20 signature sauces, including their house sauce of the same name, as well as

Mango Habanero, Lemon Pepper (Dry or Wet), Caribbean Jerk, Sweet and Sour, Teriyaki, Bourbon, Spicy Garlic, among others.

For lighter fare, they are also home to the famous "Moo Gobble Burger" which can be ordered with ground turkey or the typical ground beef. If you fancy fish they also have catfish and perch on the menu starting at one pound meals with a side and drink.

They offer a kids menu and plenty of sides including Jalapeno Poppers, Fried Pickles, Fried Okra and Potato Wedges to name

a few. The word on the street is they also have an excellent fried chicken sandwich. So stop by and join Eastown Community Association in welcoming this new local Eastown minority-owned business at 1450 Wealthy Street SE! We are happy to have them in Eastown! Eastown Wing Heaven hours of operation are Monday through Thursday from 11 a.m. to 9 p.m., and Friday and Saturdays from 11 a.m. to 10 p.m. They are closed Sundays. Face masks are required for entry and available for sale. Their full menu can be found on Wing Heaven's website at <https://wing-heavenmoo-gobble-burgers.business.site/>. ♦



The new home of Wing Heaven in Eastown Photos by Johnae Welch

BurrLaw

James Booth Burr, Jr.



Elder Care & Probate Law
Small Business Organizations
Real Estate Law

Jim been has a resident of Eastown for nearly 40 years and is a Member of the 6th and 7th US Courts of Appeal

Jim is also a member of the State Bar of Michigan and a member of the Unauthorized Practice of Law Committee and Real Estate and Business Law Sections

Office conferences by appointment
Kingsley Building • Suite 211 • 1430 Robinson Rd SE
jburr@pathwaynet.com • 616-458-1246

Treating Your Pet

With Compassion

- Dental care
- Diagnostic imaging
- Grooming
- Nutrition
- Wellness Exams
- Surgery
- Vaccines
- Preventative care



616.328.6008 | eastownvet.com

1350 Lake Drive SE, Grand Rapids, MI 49506

URBAN PERCH

A Place for Everyone

by Lee Hardy, Access Contributor

On July 21, Ryan Kilpatrick, the Executive Director of Housing Next, gave a presentation to the Grand Rapids City Commission on the current state of affordable housing in our city and the challenges of meeting affordable housing needs in the near future.

The needs are substantial. And the challenges are great. The core problem, according to Kilpatrick's analysis, is inadequate housing supply. There simply aren't enough housing units to accommodate the growing population.

This inadequacy leads directly to dramatic increases in housing prices and to disparities in access to housing as higher income households compete with lower income households for a limited number of available units.

Other important factors behind the affordable housing crisis are low wages; lack of equal opportunity in mobility, education, and health care; lack of safe

and secure environments; and racism (77% of white households own the homes they live in, while home ownership for Black households comes to only 37%).

Anyone, rich or poor, can ask about the affordability of a house or apartment. A residence is affordable for some households if the annual mortgage or rent payments do not exceed 30% of that household's annual gross (pre-tax) income. If a household's gross annual income is \$100,000, then no more than \$30,000 (\$2,500 a month) should be going for mortgage or rent payments.

While the calculation of housing affordability is based on a particular household's income (however high or low) affordable housing is intended for low-income households. It is defined by reference to a percentage of area median income (AMI). AMI is determined each year for a region by the federal Department of Housing and Urban Development (HUD).

It takes the entire range of incomes in a metropolitan region and determines the median as the midpoint in that range—where half of the incomes are below and half above the midpoint. Area median incomes for households of different sizes (e.g., two-person households, four-person households) are determined by the application of a formula to the AMI. Affordable housing is then defined in terms of a percentage of the AMI.

Typically, affordable housing—and affordable housing policy—is set at three household income levels: less than 80% of AMI is considered a low-income household; less than 50% of AMI, a very low-income household; less than 30%, an extremely low-income household. Take, for example, a household of four living in an area with a median income of \$100,000 for a household of the same size. If that household is making \$50,000—50% of AMI—then affordable housing set for that

continued on page 10

No matter who you are,
or where you are on life's journey,
you are welcome here.

Get to know your neighborhood church...
join us on Sundays!

Worship Service
10:30 AM Sundays

Drop-In Nursery
Open and Affirming

1005 Giddings Ave. SE
616/245-0578
www.eastchurchgr.org



Rev. Dr. David Wheeler, Pastor

East Church

Empowering God's community to grow in faith
through worship, service, and learning at
every age."



Billy's Lounge
1437 Wealthy St. SE
Grand Rapids, MI 49506

www.billyslounge.com

BILLY'S LOUNGE HOURS
M-F 3PM-2AM
SATURDAY 8PM-2AM
SUNDAY 1PM-2AM

LIVE BANDS
FRIDAYS AND SATURDAYS



HAPPY HOUR
M-F 3PM-9PM
SUNDAY 1PM-9PM
DOG FRIENDLY
DURING HAPPY HOURS

Eastown Researcher Creates COVID-19 Test

by Amanda Sterling, ECA Board Treasurer

Eastown resident Dr. Jack Lipton and his research team have been making national news in the fight against COVID-19. Dr. Lipton, who is the Chair of Translational Neuroscience at Michigan State University, appeared on *The Rachel Maddow Show* in July to describe the saliva test his lab will be deploying for MSU faculty, staff, and students this fall.

The test is being touted as a game changer because it will provide a quick and affordable way to detect the virus by using saliva samples that can easily be collected at home. The samples are then pooled in groups of 8 and 12 which saves on processing time and material costs. Each person is uniquely in two pools with other people. If a pool comes back negative, no one in the group needs to take an individual test. If pools come back positive, the individual(s) common to both pools are advised to get tested.

With students returning to campus in the fall, this type of testing scheme will enable scientists and the university to monitor viral spread of the virus and to notify the campus community of outbreaks should they occur. Dr. Lipton's team is playing a critical role in leveraging MSU's capacity to fight the virus and save lives.

If you happen to see him around Eastown (in one of the rare moments he's not hard at work in the lab) be sure to thank him. Science is what will get us out of this mess and folks like Dr. Lipton and his team deserve some serious kudos!



Eastown resident, Jack W. Lipton, PhD.
Photo courtesy MSU department of Translational Neuroscience

To check out the segment that aired on *The Rachel Maddow Show*, go to: <https://www.youtube.com/watch?v=9p7A16CSOPM> ♦

For COVID-19 information & resources visit:

State of Michigan:

<https://www.michigan.gov/coronavirus/>

Kent County:

<https://www.accesskent.com/Health/coronavirus.htm>

Grand Rapids:

<https://www.grandrapidsmi.gov/COVID-19>



MULLIGAN'S HOURS
M-SAT 3PM-2AM
SUNDAY NOON-2AM
www.mulliganspubgr.com
(616)451-0775



HAPPY HOURS



OPEN-9PM EVERYDAY

DOG FRIENDLY DURING HAPPY HOUR

INDUSTRY NIGHT
EVERY MONDAY & TUESDAY
9PM - CLOSE
15% OFF YOUR TAB
ALL SERVICE INDUSTRY STAFF

MULLIGAN'S PUB presents
SPICY
MAKE IT
STAND UP COMEDY
8 PM SUNDAYS

BEAT THE BAR TRIVIA
HOSTED BY
DR. KERMIT
Play every week against Team Mulligans. If Team Mulligans takes 1st place the prize money is added to the next week's 1st place jackpot.
MULLIGAN'S PUB
DRINK SPECIALS 9PM - MIDNIGHT \$2 BOTTLED BEERS
PRIZES FOR 1ST & 2ND PLACE
www.mulliganspubgr.com
1618 Wealthy St SE | GR (21+)
www.thekermit.com

FUNCTIONAL FRIENDS IMPROV
FAST | FUN | FILTHY and FREE
SET #1 @ 9:30PM
SET #2 @ 11:30PM
A COMEDY SHOW YOU CAN ONLY GET AWAY WITH AT MULLIGAN'S
EVERY WEDNESDAY

REALTORS
DAVID KIRCHGESSNER-TIFF REINHARDT

—
SERVING OUR CLIENTS AND BUILDING LONG TERM RELATIONS
—

Client Focused
Community Centered
Design Conscious
Market Savvy

david.kirchgessner@gmail.com
616-617-4644
tiffanyreinhardt@yahoo.com
616-443-9837

GREENRIDGE REALTY 2213 WEALTHY ST SE
GRAND RAPIDS



Engaging Eastown

by Staci Rickman, ECA Board Secretary

On August 10th, I moved to a different part of Eastown. As I went through the arduous task of slowly unpacking boxes, I came across my “Black Lives Matter” and “In This House We Believe... Kindness is Everything” signs and promptly put them in my new yard and window. I found myself wondering if my new neighbors would be receptive or not, and mentally prepared to have the hard but vital conversation about race equity and the Movement for Black Lives if I received pushback.

The next day I received a note under my door from my housemate who lives in the second floor apartment above me. She very kindly welcomed me to the building and included a P.S. that said, “I love the signs you put up!” and I immediately felt at home in my new home (thank you, MB!).

As I was walking down the street later in the day, I was delighted to see that many of my neighbors had similar signs in their yards as well. While I have known for years (honestly, decades) that Eastown is known for being a very open and welcoming community that values the vibrancy of diversity among people, I felt excited to have moved into a part of Eastown where so many people were openly supportive of the Black Lives Matter movement and other social justice issues like climate change and basic human rights.

Walking home and longing for the days when I can once again use my canvas reusable shopping bags for groceries, I began to look at the signs and the houses through a more thoughtful lens. I wondered what all my awesome neighbors do, in addition to putting up signs, to support black lives and the anti-racism movement. What more can we all do, as members of this incredible community?

Like many people and organizations committed to race equity and engaging in anti-racism work, ECA board members have been having conversations about this very topic as well. What can we do, not only as a community association but as a community of diverse individuals, to actively pursue race equity and social justice? What can we do to move beyond just putting up signs and writing articles and social media posts that share our values? What can we do to support the needs of all our neighbors, especially our neighbors who are particularly impacted by racism and those who are most vulnerable, to combat the dual pandemic of systemic oppression and COVID-19? What can we do for the children of our community who are losing many of the social-emotional supports they need and usually get through school and afterschool programs? How will we engage in healing-centered engagement efforts to recover from the trauma that inevitably comes from living in America during a dual pandemic and economic crisis?

The ECA is here to help – but we need input, ideas, energy, and efforts from Eastown community members like you to help us create and/or advocate for systems, policies, procedures, virtual and/or otherwise safe events, that begin to break down social injustice and inequity. We need innovative ideas for resources and community services available to support our residents, including access to affordable housing. We need you. We all have a lot on our plates right now but for those of us who have a

little extra time to give, I ask you to please consider joining our monthly ECA board meetings in the comfort of your home via Zoom to participate in our community conversations, or go one step further and attend a virtual ECA Community Engagement Committee meeting. We are actively looking for new neighbors with diverse experiences, perspectives, and ideas to join our group.

I am honored to live in a community where I can walk down the street and see signs promoting inclusion and social justice in so many yards – but it is time for all of us, myself included, to do more than put up signs and participate in indirect/passive efforts. It’s time for all of us to come together as an Eastown community and engage in active advocacy on behalf of the lives of our BIPOC neighbors and Eastown visitors – including those of us who have the (white) privilege of defaulting to a “comfort zone” by not doing anything at all. Will you join us in helping Eastown not just “talk the talk” but “walk the walk” for race equity and building a stronger, welcoming, and more inclusive Eastown?

If you are interested in learning more, please reach out to us via phone at 616-451-3025, contact us on the Eastown Community Association’s facebook page, or email us at info@eastown.org. We look forward to “seeing” you soon in one of our upcoming virtual meetings!

An advertisement for 'The Cobbler' shoe and leather maintenance & repair shop. The background is a black and white photograph of hands working with a hammer and chisel on a piece of leather. The text is overlaid in white, bold, sans-serif fonts. At the top, it says 'THE COBBLER' in large letters, followed by 'EASTOWN GR·MI' in smaller letters. Below that, it says 'SHOE & LEATHER MAINTENANCE & REPAIR'. At the bottom, it provides the address '419 NORWOOD AVE SE GRAND RAPIDS, MI 49506', the phone number '(616) 451-2178', and the website 'THECOBBLERGR.COM'. The text 'NEW LOCATION IN THE EAST BUILDING BEHIND WOLFGANG'S' is also present.

THE
COBBLER
EASTOWN
GR·MI
SHOE & LEATHER
MAINTENANCE & REPAIR
NEW LOCATION IN THE EAST BUILDING
BEHIND WOLFGANG'S
419 NORWOOD AVE SE
GRAND RAPIDS, MI 49506
(616) 451-2178
THECOBBLERGR.COM

Eastown Says Farewell to Longtime Jeweler

by Emma Heemsker, ECA Executive Director

Andrew Hetland didn't plan to become a jeweler when he studied at Grand Rapids Junior College in the mid 1970's. He had just gotten out of the army and went to school on the GI Bill. "I didn't have two nickels to rub" he recalled as he talked about his recent plans to retire after over 45 years at Mckendree Jewelers, an Eastown institution known for its custom handmade jewelry and unique woodwork facade, at 1443 Wealthy Street.

Born and raised in Sparta, Hetland "just jumped right in. It was an opportunity for me," he said as he described how circumstances aligned and made way for him to have a space to sell his work in Eastown. As a lifelong artist, Hetland often drew, painted and worked in galleries. "I was studying glass blowing and iron work. I started doing jewelry and sold my first piece when I was still in school. My paintings and drawings were gathering dust, but my jewelry was selling."



Andrew Hetland's creations: From left: Custom diamond necklace. Custom sterling silver ring set with princess cut blue sapphires. Custom 5 carat diamond ring Images courtesy Mckendree Jewelers

Having met a few artist friends selling artwork around town, Hetland partnered with a couple of metal and leather workers to form Mckendree, named after a band called *Mckendree Spring*, in 1978. Hetland explained, "They were country orientated rock. They had sung a very inspirational song about doing what you want to do and feeling good about it. It was all about forgetting the status quo, working with our hands, getting back to the earth. Doing good stuff."



Mel Aukman, Andrew Hetland, Bill Rothwell, and Ron Lichtenstein in 1978 Image courtesy Mckendree Jewelers

Hetland and friends were also inspired to create the improvised wooden storefront and decorative interior of Mckendree by hand, which was artistically directed by the late Melvin "Mel" Aukeman. Hetland noted, "It took about six months to make the façade and the interior. We stopped to be able to open for



Longtime owner and jeweler, Andrew Hetland, with manager, Amy Speet, in front of Mckendree Jewelers. Mckendree plans to close its doors after 45 years in business in Fall 2020 Photo by Scott Hickox

the Eastown Street Fair. We had people from the neighborhood helping and a lot of them gawking." Since then, the building has become a staple of Eastown's streetscape, housing eateries in its western half, most recently, Haitian restaurant, Chez Olga.

Over time, people's plans changed and ownership shuffled. Ron Lichtenstein joined Mckendree doing stained glass and he and Hetland worked together for about 15 years until Lichtenstein went on to Gallery 154, in the late 1980's.



Andrew Hetland and Ron Lichtenstein assembling the front door in 1978 Image courtesy Mckendree Jewelers

For Hetland, that meant he became the sole proprietor of Mckendree Jewelers. He has been making custom jewelry there ever since; "I could have ended up someplace else. The whole experience here was all circumstance. Everything just seemed to fall together."

continued on page 9



Mckendree Jewelers facade at 1443 Wealthy Street in 1986 *Image courtesy City of Grand Rapids Archives*

As Mckendree's longest and only employee, Amy Speet's connection to the business also began as happenstance. She explained in a recent email, "It was January 1999 and I was looking for the new coffee shop that opened in Eastown. I stopped in here and asked Andrew if he knew where it was. He asked why and I said I was looking for a job. So he gave me an application and here I am!" She and Hetland have helped fulfill many unique and one-of-a-kind creations for thousands of customers since then.

When asked how she feels about Mckendree closing its doors, Amy Speet noted, "It's been more than just a job. I was 23 when I started. It's been a very good constant in my life. I've learned so much about jewelry I could write a book! And Andrew shares the wonderful food he makes, so why would anyone leave that?"

The plan was for Hetland to retire in early 2020, but like many things, Covid-19 made that take a little longer than expected. The delay has enabled him to get caught up on a lot of work and put together plans to sell leftover inventory. They are not, however, taking any more custom orders. The building has been sold to a local commercial property owner.

Hetland's plans for retirement are to "do nothing and do that slow. I am going to continue to make and design pieces but now pieces I want to make. I'm probably gonna go back to stone carving and woodworking more and sculpture type things. All of that I've done over the years. I've got some pretty big pieces of stone to carve. I have so many ideas that I could never do - soon I'll get to play."

Hetland expressed his deep appreciation for every project he has had the opportunity to work on in Eastown: "Thank you very much for everyone who has helped me grow. People have taken me down so many wonderful roads and taught me so much by asking me to make different things. I am the biggest winner in town. It's been a wonderful experience here. I've never once considered going some place else. It's the best place in the city. Thank you for everybody and everything."

The ECA joins many customers and residents in thanking Andrew for his contribution to Eastown and we send him our best wishes for a happy retirement.

Inquiries about Mckendree Jewelers' remaining inventory can be sent to mckendreejewelers@gmail.com.



Mckendree Jewelers facade at 1443 Wealthy Street in 1988 *Image courtesy City of Grand Rapids Archives*



Andrew Hetland unloading the overhang in 1978 *Image courtesy Mckendree Jewelers*

Introducing Director, cont.

2003 with a great group of young people who are still devoted to improving Grand Rapids. Since then, I've spent over 15 years in nonprofit operations, the last 6 of which were in the affordable housing industry. I've also found that I really enjoy collaborating and strategizing around policy and process issues with people from all different backgrounds (I may be in the minority when I say I really enjoy committee work!). Ultimately, I went on to study urban planning and community development in graduate school, but I am still proud of my humanities, art, and sociology background because it gave me a lens to think about social issues in my everyday life.

Lee: Do you have a prior connection to Eastown? If so, what were your impressions of the neighborhood?

Emma: I'm a born and raised proud Eastowner! I was born (at home) on Giddings, lived on Byron during my youth and then moved to Norwood during my teenage years, and ultimately went to undergrad at Aquinas College before moving to Chicago in 2006. Some of the great joys of my summers as a kid were the Eastown Street Fair, buying candy at Argos (while my brothers picked out comic books), and making jewelry from

beads that my friends and I bought at Spirit Dreams. My family still lives in the neighborhood and Eastown has had a big influence on who I am. I really appreciate its vibrant, easygoing character.

Lee: Tell us a little about yourself—your education, work experience, your community involvements.

Emma: Most recently, I served as the Director of Programs and Outreach at the Illinois Housing Council, a state-wide membership and policy advocacy organization for the affordable housing industry. During that time, I had the opportunity to volunteer on the Housing and Land Use Committee of my local neighborhood association where I worked on displacement issues with local officials and neighbors. Prior to that, I earned my Master's in Urban Planning and Policy - Community Development from the University of Illinois at Chicago in 2012 and recently served on the Women in Planning and Development Board in Chicago as the Membership Chair. Since undergrad, I have worked at mission-driven organizations that were focused on quality-of-life where I was able to build skills in outreach, operations, fundraising and event planning - skills I am sure will come in handy in my new role!

Lee: How would you describe your leadership style?

Emma: I would describe my leadership style as collaborative and supportive. I want natural leaders (or people who might not yet know they are leaders) around me to be able to thrive. At the same time, I am goal oriented so I tend to try to keep everyone on track and headed in the right direction to complete a shared mission. Maybe this is an example of where my combination of creativity and organizational abilities come into play again? I hope to be able to cultivate new leaders with diverse interests and backgrounds in ECA's committees and Board going forward.

Lee: What do you take to be the strengths and assets of the Eastown community?

Emma: Eastown has a ton of great strengths and assets to boast about. I think some of my favorites are its inclusiveness, walkability, vibrant culture, and diversity. These are also all things I'd like to nurture and continue to grow with residents.

Lee: What's on your to-do list as

Executive Director for the rest of 2020?

Emma: I am excited for my new role and hope to be able to connect with as many neighbors and stakeholders as possible to learn about issues and encourage their involvement. I'm also looking forward to doing some strategic planning, examining the role of the ECA in the movement for racial justice, and engaging with neighbors in an ongoing conversation around those important issues.

Lee: What do you take to be the chief challenges that face Eastown?

Emma: I look forward to hearing the community's input on what the chief challenges are! I hope to be able to be a listening ear about issues of importance to them, to address issues of inequity and to come together to advocate on behalf of the most vulnerable, especially during these unprecedented times. I hope to help keep everyone connected during COVID-19 and to think of creative ways we can support each other and the neighborhood. I can't wait to meet and re-meet new and old neighbors alike!



A Place for Everyone, cont.

household will cost no more than \$15,000 a year (30% of 50,000), which comes to \$1,250 a month.

Grand Rapids neighborhoods, Eastown chief among them, have become very attractive places to live, both for younger households and higher income households. As a result, they have become less affordable. Studies of population pressure on the city indicate that by 2025 we will need some 5,340 additional rental units and 3,548 additional owner-occupied units to meet our housing needs.

The problem of affordable housing lies not only in the future. It is with us now. Currently, more than 50% of renters in Grand Rapids pay more than 30% of their income in housing costs. They are housing "cost-burdened." How to solve the problem of affordable housing in the city of Grand Rapids will surely be the subject of city-sponsored conversations in the near future.

Find more information and ways to engage on housing at: <https://www.grandrapidsmi.gov/Government/Programs-and-Initiatives/Housing-NOW> ♦

The image shows a promotional graphic for 'Early Bird' featuring a coffee cup, a muffin, and a laptop. A blue banner at the bottom contains the text: 'STUDENT + TEACHER DISCOUNT 10% OFF 4PM-CLOSE WITH VALID ACADEMIC ID'. Below the banner is the website 'WWW.THATEARLYBIRD.COM' and the address '1445 LAKE DR SE GRAND RAPIDS, MI 49506'.

2020 Census Homestretch

by Amanda Sterling, ECA Board Treasurer

The 2020 Census needs our help. Due to a shortened door-knocking period, we are in serious jeopardy of a significant undercount this year which will have long-lasting impacts on our communities.

The Census Bureau faced delays in starting in-person data collection operations due to the pandemic and is now working double-time to finish the work by September 30. The door-to-door outreach portion of the Census is critical in counting hard-to-reach groups such as POC, rural folks, and indigenous populations.

How you can help:

- Complete the Census online or via phone ASAP if you haven't already.
- Go to 2020census.gov/ for more information.
- Use social media to encourage friends, family, and neighbors to complete the Census if they haven't already.

- There are a number of areas in the country still hiring part-time census takers. Share the job link 2020census.gov/en/jobs.html to encourage your networks to apply.

The Census is so important! Here is just some of the funding that is allocated based on the Census count:

- Healthcare (Medicaid, Medicare Part B, the Children's Health Insurance Program, etc.)
- Education (Head Start, Pell Grants, school lunches, etc.)
- Roads & Bridges
- Emergency Services
- Worker Training

In addition to the Census determining where federal funding is directed, it is also used to determine how many Congressional representatives each state will have for the next decade.

In fact, as a result of population changes between 2000 and 2010, eight

states gained seats in the House of Representatives and 10 states had fewer seats (Michigan was one of them).

Complete the Census today if you haven't already and encourage everyone you know to do the same. We need to make sure everyone counts because it will inform policy for the next 10 years! ♦



ECA Treasurer, Amanda Sterling, Census door knocking Photo by Sean Kenny



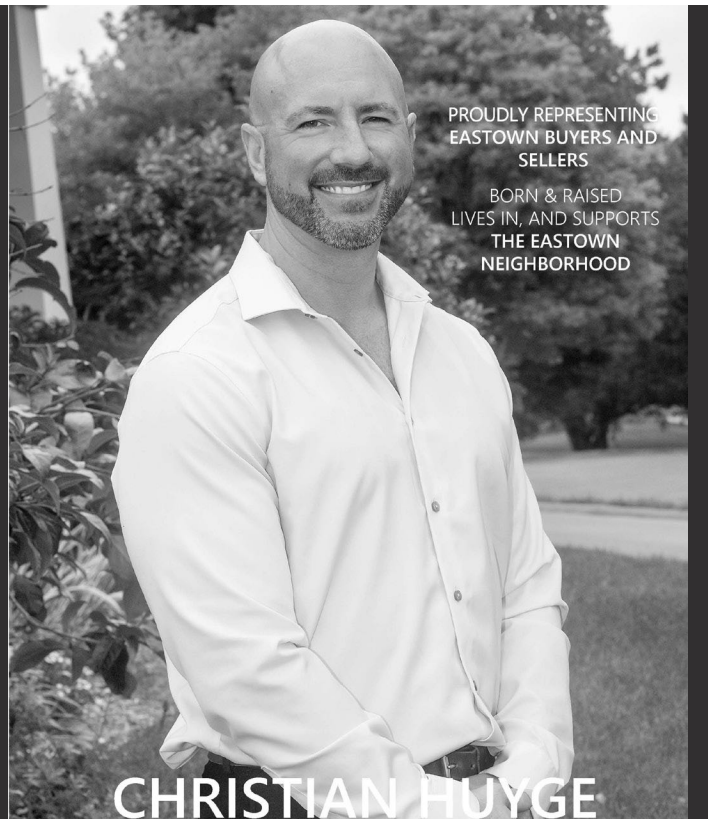
SARNACKI LAW FIRM

Family Court Advocacy & Mediation

Because Your Future Matters

David C. Sarnacki
Featured in The Best Lawyers in America
616.988.9500
Eastown Resident Since 1991

SarnackiLaw.com



PROUDLY REPRESENTING
EASTOWN BUYERS AND
SELLERS

BORN & RAISED
LIVES IN, AND SUPPORTS
THE EASTOWN
NEIGHBORHOOD

CHRISTIAN HUYGE



POLARIS
REAL ESTATE

616.889.8800
CHRISTIAN@POLARISNS.COM

HOW TO IDENTIFY A CENSUS TAKER



TIME OF DAY

Census takers will visit between 9AM - 9PM LOCAL TIME



ID BADGE

Ask for official Census Bureau identification



VEHICLE IDENTIFICATION

An "Official Business" notice will be placed on the vehicle

SMART DEVICE

Census takers will carry an iPhone to record information



WEAR A MASK

Census takers are required to wear a mask and maintain 6ft social distancing

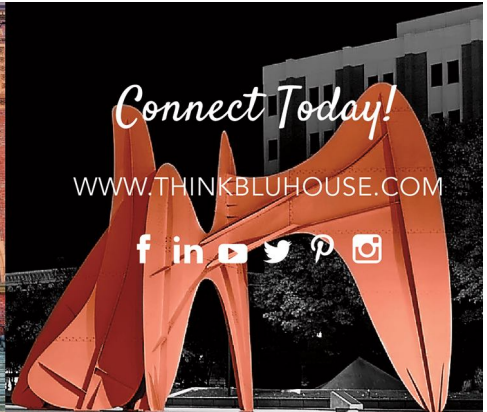


Fill out your form online or by phone!

www.my2020census.gov | 844-330-2020



Image: capnd.org/resources-in-nd/census-2020.html



ARE YOU SELLING?

- Professional Photos/Videos
- Proven Sales Systems
- Maximum Exposure
- Accurate Pricing
- Proactive Marketing

ARE YOU BUYING?

- Effective Communication
- Personal Understanding
- Market Stats & Quality Advice
- Expert Negotiation Skills
- In-house Closing Team

HOW WE'RE DIFFERENT

- Team Brokerage Approach
- Innovative Technology
- Locally Owned
- In-house Marketing
- Client Centric

616.901.4541
ryan@thinkbluhouse.com



blu house properties
ryan ogle

Lake Drive Resurfacing

Lake Drive resurfacing construction began on August 10th and will continue through the end of September.

A portion of the street is closed from Atlas Avenue to the east city limits (the border with East Grand Rapids). Lake Drive is closed to through traffic, but open to local businesses. Wealthy Street will remain open.

According to the project engineer, as of August 21st, removals are almost completed on the south side of Lake Drive, drainage structures have been installed at Glenwood, curb and gutters have been placed from Glenwood to Norwood on the south side of Lake Drive, and excavation and placement of planting mix for trees on the south side has been done.

The project is scheduled to be completed by the end of September 2020.

Free Home Energy Analysis

Now is the perfect time of year to start thinking about energy efficiency. Consumer's Energy is offering a free Home Energy Analysis to evaluate your home's efficiency either in-person or virtually. A trained energy analyst can provide you with energy saving tips and a customized home energy report. Examples of upgrades: LED Lightbulbs, LED nightlights, Pipe wrap, Aerators, and Showerheads.

Call 833-685-1312 to schedule your free home energy analysis, or schedule online at HomeEnergyAnalysis.com

City Seeks Input on Police Oversight

The City of Grand Rapids Office of Oversight and Public Accountability (OPA) draft strategic plan is available for public comment. OPA also released a report on police studies and recommendations. To read the plan and give feedback please visit:

<https://www.grandrapidsmi.gov/Government/Programs-and-Initiatives/Office-of-Oversight-and-Public-Accountability/OPA-Strategic-Plan-Feedback-Form>

The Grand Rapids Police Department's FY-2022-2023 Draft Strategic Plan public comment period has ended but you can still view the plan and give feedback here:

<https://www.grandrapidsmi.gov/Government/Departments/Police-Department/Police-Strategic-Plan-Feedback-Form>

Free Parks & Rec Outdoor Classes

The City of Grand Rapids Parks and Recreation Department is offering six free outdoor fitness classes through September 26 with Covid guidelines in place. All classes are free and do not require registration. For more information visit:

<https://www.grandrapidsmi.gov/Our-City/News-Media/Parks-and-Recreation-announces-fifth-summer-of-free-outdoor-fitness>

Mayors' Grand River Cleanup

WMEAC is hosting the Mayor's Grand River Cleanup socially distanced from Saturday, September 12th - Saturday, September 19th. You may remove trash from the tributaries and storm drains that feed into the Grand River in the neighborhood of your choice as well as from the Grand River itself.

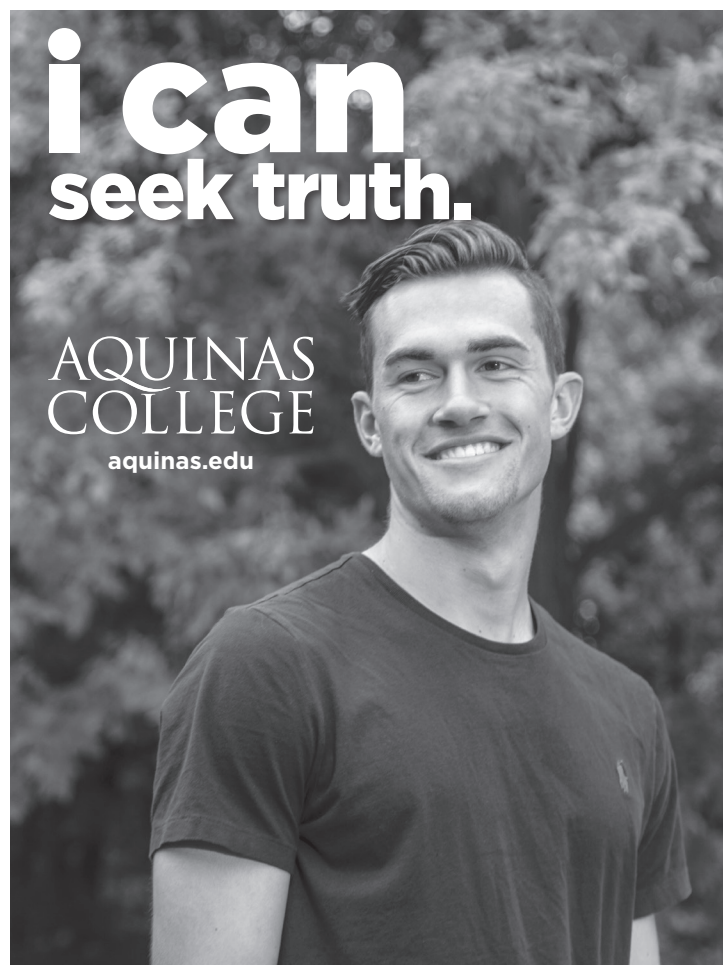
To help clean up in Eastown you can pick up supplies at the ECA, 415 Ethel Ave. SE on 9/12 from 10am-12pm or 5-6pm; 9/13 from 12-2pm; and 9/14 from 5-6pm. Please wear masks and maintain social distancing. For a full FAQ and general event information please visit <https://wmeac.org/mayors-grand-river-cleanup/>. For questions specific to ECA supply pickup please email info@eastown.org. Help keep our 'rapids' grand!

ECA Community Engagement

The Eastown Community Association is looking for residents who want to be engaged and helpful around their community!

Conveniently, we have a Community Engagement committee we're looking to get members for, with aims to get the word out for things happening around town and get work done for our neighbors!

If interested, please email info@eastown.org about joining or with questions. We'd love to have you!



Farewell, Don Lee

by Pamela Goderski, ECA Board Member

After many years of service to the Eastown Community Association as our Executive Director, Don Lee has moved on to his next big adventure.

The E.C.A. Board of Directors wanted to give Don a proper send off. As much as we would have loved to have a big Community send off, in these COVID times, that just wasn't an option.

On July 24th, the Board of Directors gathered at Board Member, Pamela Goderski's backyard patio. We wore masks, maintained social distancing, and sanitized our hands frequently. It was wonderful to see each other again, after only having Zoom meetings since March. We all had an opportunity to speak about how we have gotten to know Don over the years, share stories, and tell him how much he has meant to Eastown, and each of us individually.

James Hughes, from Triumph Music Academy, brought a small sound system and played some music from Jack Handy's computer. Harmony Brewing Company provided Pizzas and

Breadsticks. Sarah Jean Anderson created a custom art piece that we all signed, framed, and presented to Don. Thank you, for your help with our celebration of Don.

It's hard to put into words how much Don will be missed. His many contributions and his true love of and commitment to the Eastown community has left a legacy that will benefit us all, for years to come.

Bon Voyage, Don. KEEP EASTOWN WEIRD!



Farewell Don! Photo by Pamela Goderski



A socially distanced farewell Photo by Pamela Goderski



Photo by Pamela Goderski

NOW DELIVERING BEER!

SIX PACKS OF BEER
FIDDLE STIX~CROSSROADS~LOVELY DAY~ERSTE LAGER~STOCKBRIDGE BROWN
RIGHT TO YOUR DOOR

HARMONY

BREWING COMPANY

order online

WWW.HARMONYBEER.COM



eastown community association

USEFUL NUMBERS

Emergency 911
Grand Rapids Customer Service 311

Police: Non-emergency 456-3400
 Silent Observer 774-2345

Eastown Community Association 451-3025

Community Police Officers:
 Officer Chad Vandam (day) 292-5557
 Officer Daryl Howard (night) 450-6205
 Captain Mark Ostapowicz 456-4485

John Witte, Calvin College
 Dean of Students 526-6548

Katharina Gross, Aquinas College
 Assoc. Provost, Engagement 632-2112

WEBSITES/EMAILS

Eastown Community Association:
www.eastown.org
www.facebook.com/eastownngr

The City of Grand Rapids:
www.grandrapidsmi.gov
Mayor of Grand Rapids
 Rosalynn Bliss: mayor@grcity.us

Second Ward Commissioners (North of Wealthy):
 Milinda Ysasi: mysasi@grcity.us
 Joseph D. Jones: jdjones@grcity.us

Third Ward Commissioners (South of Wealthy):
 Senita Lenear: slenear@grcity.us
 Nathaniel Moody: nmoody@grcity.us

The Rapid Bus System:
www.ridetherapid.org

Kent County:
www.accesskent.com

State of Michigan:
www.michigan.gov

Get the Lead Out!
www.healthyhomescoalition.org

CLEAN & GREEN

If you're not recycling your paper, glass and cans, start now by calling the city for a free recycling bin: 456-3232

If you have electronic components you need to get rid of, you can take them to:
Kent County Recycling Center
 977 Wealthy SW/Grand Rapids
 Monday-Friday, 7:30 a.m.- 4:00 p.m.

CompRenew
 629 Ionia SW/Grand Rapids
 Monday-Friday 10:00 a.m.- 6 p.m.

Valley City Electronic Recycling
 2929 32nd St SE
 Grand Rapids MI 49512
 616-421-3386

Have an item to recycle but not sure where to take it? Visit www.recyclekent.org/ for locations to accept most household items.

Used auto oil can be taken to the Auto Zone, on Fuller just south of Leonard, for free recycling.

If you wish to reduce the amount of junk mail you receive, try:
www.41pounds.org or www.dmachoice.org



REASON #7

walkable schools in the heart of your neighborhood

neighborhood schools GRADES PK-5

“The teachers are exceptional educators and kind mentors, the administration is engaged and open to change, and the attending community is incredibly rich and dynamic.”

Christy Vos GRPS PARENT

CAMPUS ELEMENTARY
CONGRESS ELEMENTARY

GRPS.ORG/ENROLLTODAY

EASTOWN COMMUNITY ASSOCIATION

415 Ethel Ave SE

Grand Rapids, MI 49506-9907

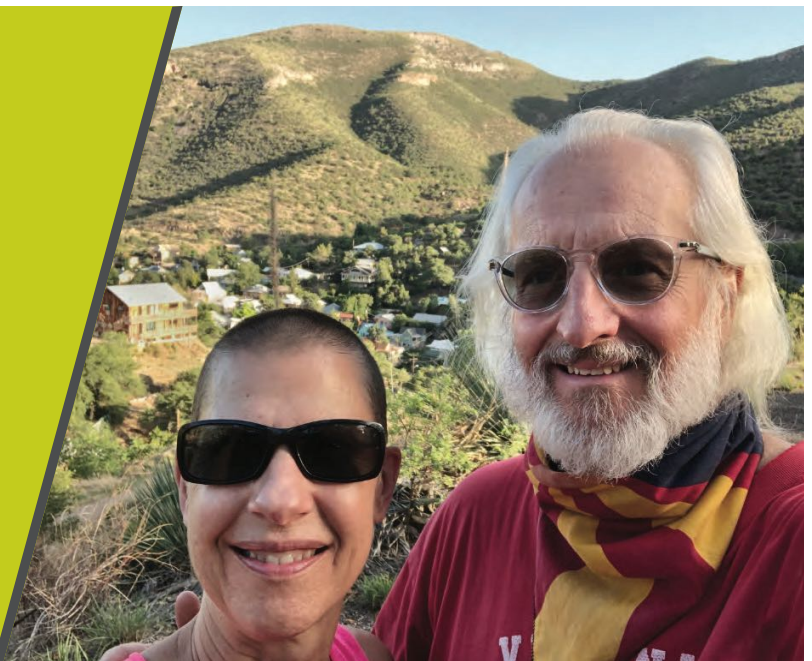
NON-PROFIT
ORGANIZATION
U.S. POSTAGE

PAID

GRAND RAPIDS, MI
PERMIT NO. 277

"We recently sold our home in Grand Rapids with the Cheryl Grant team. The house sold in 5 days with multiple offers over the asking price! From the beginning of our planning to the actual sale and closing, Cheryl and her team provided comprehensive service and advice and helped us stage the house for photos that were engaging to potential buyers. She also guided us through the protocols for selling our home during the worst possible time the COVID 19 pandemic. Cheryl and her team were life savers. We believe we made the best possible choice for a realtor!"

Serving Eastown since 2004!



- Steve and Sharon Barton
Your Neighbors

kw GRAND RAPIDS
NORTH
KELLERWILLIAMS. REALTY
616.822.3206
CherylGrant.com